

*Minnesota*

WORKFORCE INNOVATION AND OPPORTUNITY ACT

## State and Local Governance



Governor's Workforce Development Board  
Policy Solutions that Work for Minnesota



# State and Local Governance

- WIOA expands the strategic roles of state and local workforce development boards.
- WIOA positions boards to meet the workforce needs of local and regional employers.

# State Workforce Board Membership

## Minimum Membership

- **Business Representatives**
- **Workforce Representatives**
  - Labor organizations required
  - Registered Apprenticeship required
  - CBO's (optional)
- **Other Representatives to include:**
  - Governor
  - A member from each chamber of the state legislature
  - Local chief elected officials
  - State government officials
  - Governor designees
  - Other representatives



# Governor's Workforce Development Board Membership

- Governor Dayton appoints members to the board.
- Minnesota's state board is representative of:
  - Voting Members
  - Non-Voting Members

# Voting Members (41 Total)

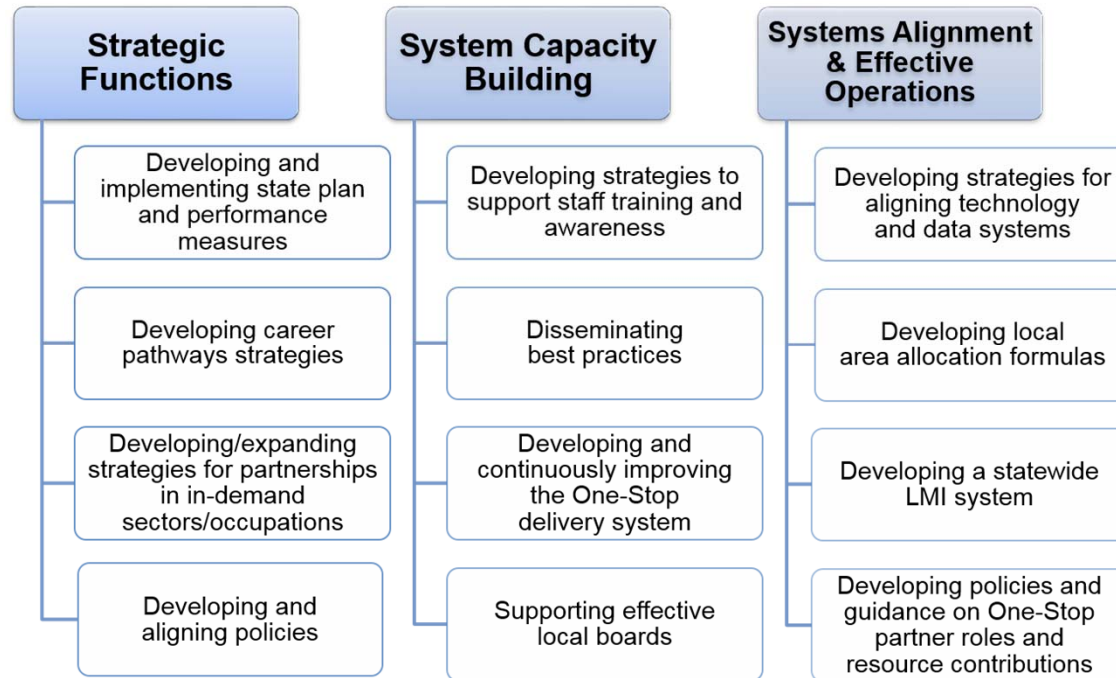
- Governor (1)
- Chief Elected Officials - City/County (2)
- Legislature – majority – house/senate (2)
- State Agencies – DEED, MDE, DHS (3)
- Private Sector (21)
- Labor (6)
- Community Based Organizations/Youth (2)
- Education: MnSCU, U of M, Private Post-Secondary, Career Technical Education (4)

# Non-Voting Members (14 Total)

- Adult Basic Education (1)
- Public Libraries (1)
- Women's Economic Security Act (1)
- MN Workforce Council Association (1)
- State Agencies – DOLI, OHE, DOC, MMB (4)
- Community Based Organizations (2)
- Secondary/Post-Secondary Vocational Institutions, School-based Learning, Legislature – minority – house/senate (2)

# State Workforce Board Functions

## Board Functions to Assist the Governor



P.L. 112-128 Sec. 101(d)

# Local Workforce Boards

- Local boards will maintain much of the same structures under current law except the number of required members is reduced.
- Local boards may appoint standing committees such as a youth committee, a One-Stop partner committee, and a committee focused on serving individuals with disabilities.



# Local Workforce Board Membership

## Minimum Membership

- **Business Representatives**
- **Workforce Representatives**
- **Other Representatives to include:**
  - Adult Education/Literacy Providers
  - Higher Education (including community colleges)
  - Economic and Community Development
  - Wagner-Peyser Employment Services
  - Vocational Rehabilitation
  - May include others determined appropriate by chief elected officials



# Local Workforce Board Membership

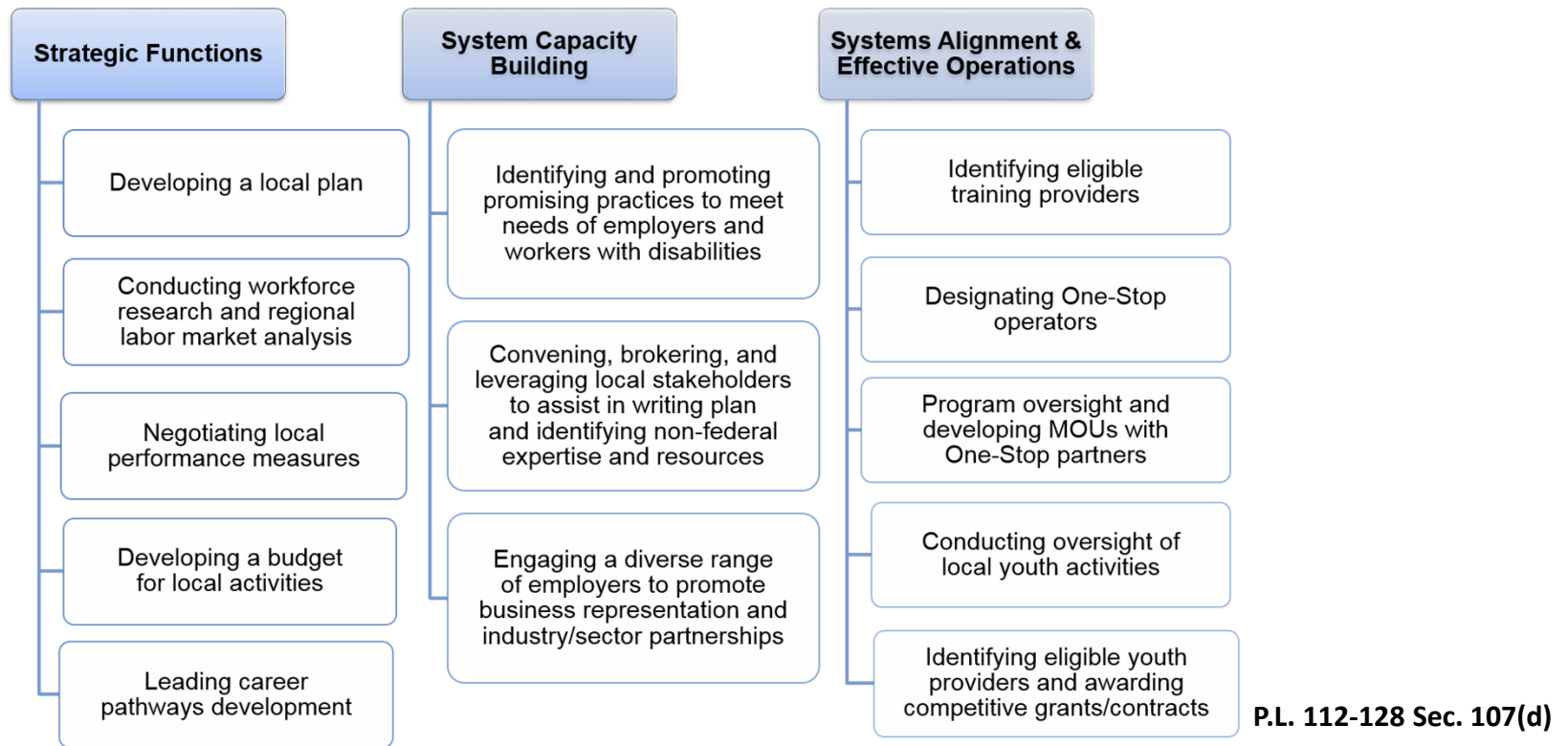
## Other Representatives

At the discretion of the chief elected official in the local area, membership of local boards may also include representatives of:

- Community-based organizations addressing the employment needs of individuals with barriers to employment
- Organizations serving veterans
- Organizations providing or supporting competitive integrated employment for individuals with disabilities
- Higher education institutions providing workforce investment activities, including community colleges
- Philanthropic organizations
- Organizations addressing the employment, training, or education needs of eligible youth, including those serving out-of-school youth

# Local Workforce Board Functions

## Responsibilities





## Focus on Regional Collaboration

- States are required to identify regions within their state.
- Local areas in identified regions will have coordinated planning and service delivery strategies.

# Minnesota's Regions

